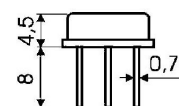
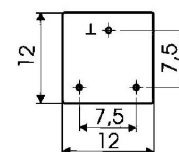
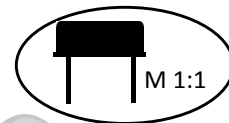


*Electrical Performance*

Center frequency range, kHz	Operating mode class	3dB Pass Band, ppm	In-Band Ripple, max (dB)	Insertion Loss max (dB)	Shape Factor		Guaranteed Attenuation min (dB)
					max (unit)	of range (dB)	
FP2P4-563							
15000...27000	Fundam.	200...500	1.0	4.0	3.0	60/3	75
	Fundam.	500...750	1.3	3.0	2.8	60/3	75
	Fundam.	750...1100	1.5	3.0	2.7	60/3	75
	Fundam.	1100...1800	1.5	3.0	2.8	60/3	75
	Fundam.	1800...3000	2.0	3.0	2.8	60/3	75
	Fundam.	3000...3500	2.3	3.0	2.8	60/3	75



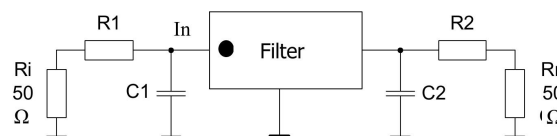
Metal package

*Typical series*

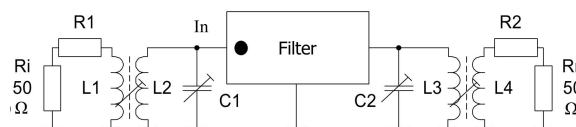
U	V	#	h	@	0	7	8	u	u	...
7h h 3'										
-21.4M-18	21400	18.0	5	3	7	6	75	†	2000	3.5
-21.4M-22	21400	22.0	5	3	8	6	75	†	2	
-18.5M-45	18500	45.0	2.0	3	8	6	75	†	15	0.7 2
-21.4M-30	21400	30.0		3	8	6	75	†	75	0.7 2
-21.4M-60	21400	60.0	2.0	3	8	6	75	†	15	0.7 2

*Environmental*

- Vibrations 5g
- Mechanical shock of repeated action 15g
- Storage temperature: -60 to +85°C


*Long Term Frequency Stability*

- Min 15 000 hrs. of continuous operation
- Storage 25 years


*Ordering Information*

Filter FP2P4-563 -D- 25.0M - 45

 Product:  
FP2P4-563

 Temperature range:  
A(-10...60); V(-40...70);  
D(-60...85)

 Center frequency:  
MHz

 Pass band:  
kHz